

Array

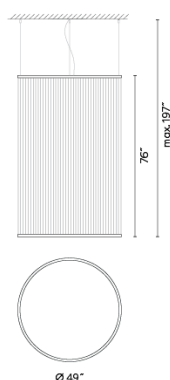
1845

Design By Umut Yamac

The large-scale cylindrical silhouette hanging Array lamp wraps around the space rather than dominating it thanks to the spacious spread of the filament creating a translucence through the volume it occupies.

VIBIA

Spec sheet



Optional: Extra cable length
Min. Quantity, upcharge and extra lead time apply

Finish

- 47 Green L1
NCS S 4005-G80Y
- 37 Terra Red
NCS S 4040-Y70R
- 24 Beige M1
NCS S 2005-Y50R

LED color temperature 2700 K

Dimming 0-10V

Installation type Remote Micro / Surface

Materials

Upper ring: Aluminum
Bottom ring: Brass
Diffuser: PC- Polycarbonate
Threads: PES FR

Light source 1 x LED STRIP 76W 48V

LED CRI>90 9196 lm 121
2700 K

Driver Constant Voltage 100~277 V V
50~60 Hz HZ

Dimmable LED IP20 Multi-volt

UL Dry Location 50-60Hz 0-10V

Application

Pendants

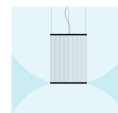
Packaging

1 Box
4.72 m x 53.15 m x 53.15 m
Gross weight 52.64
Net weight 30.62
Vol. 7.7234

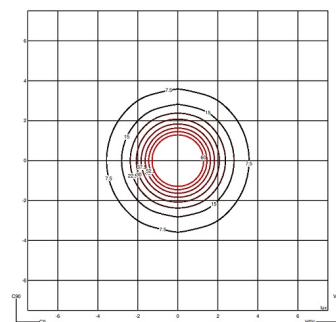
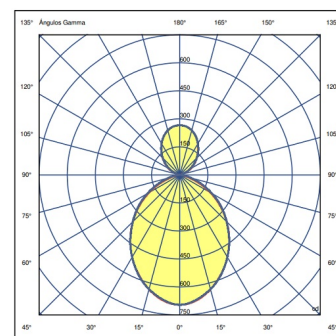
Lighting effect

General lighting

Lamp for general lighting that equally distributes the light in all directions.

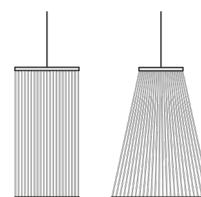


Photometric Data



Efficiency 100%
Coordination System CG
Total Flux 2047 lm
Maximum Value 695.cd cd

Other Applications



VIBIA, INC.

USA & CANADA
272 Fernwood Ave. Edison, NJ 08837. USA
Phone 732 417 1700 sales@vibia.com www.vibia.com/us/usa

HEADQUARTERS
Progrés 4-6. 08850 Gavà
(Barcelona - Spain)